

# Our Identification



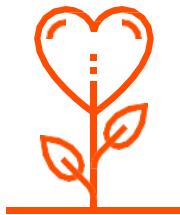
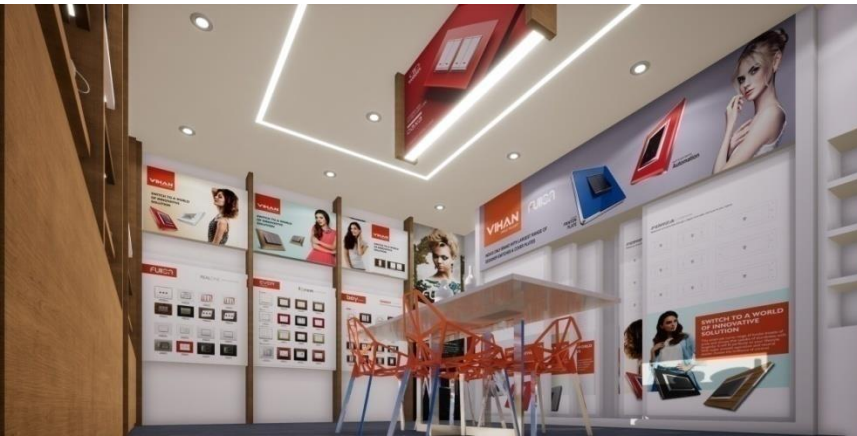
Adorn Your Space  
With Vihan Modular Switches

Present since 1997

Over 3500 + Direct Distributors

PAN India Support

Quality Driven Company



Comprehensive  
Product Range



Assured Quality



Innovative  
Solutions



Excellent  
Customer Service

# Defining the Dream

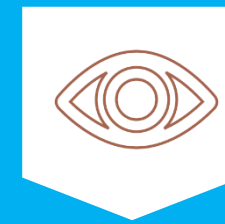
## Mission and Vision Statement



### MISSION

To foster transparency in the Indian Home Automation Market by empowering the Consumer.

The first step would be in the arena of Artificial Intelligence...



### VISION

To be the leader of an industry level transformation by introducing Innovative products to every Indian household.



# Mindset Matters

## Principles for the Business



**Excellent Relationship**

Building an excellent relationship with customers is key to the long-term success of a business.

Having a strong connection based on trust and communication helps customers feel more secure and connected with a brand.


Lead to growing customer retention and your repeat purchase rate.



**Consumer Centricity**

The consumer centric approach would be our **biggest competitive advantage**.

Along with facilitating our Key Partners, our aim should be to **delight our consumers**.



**Brand Building**

The aim is **not** to get **Footfall in the Short run** but **Mindspace in the Long run**

With this long term approach towards building a beloved brand, we proceed...





Our Diversification





# HOME AND BUILDING INTELLIGENT CONTROL SYSTEM

**VIHAN**  
SPREAD THE LIGHT  
V-BUS







Doing things physically expended additional time and vitality. The need to lessen endeavors and increase productivity prompted the invention of technology. People used innovation as a means to create things that would facilitate their life. However, the demand for luxury gave birth to automation.

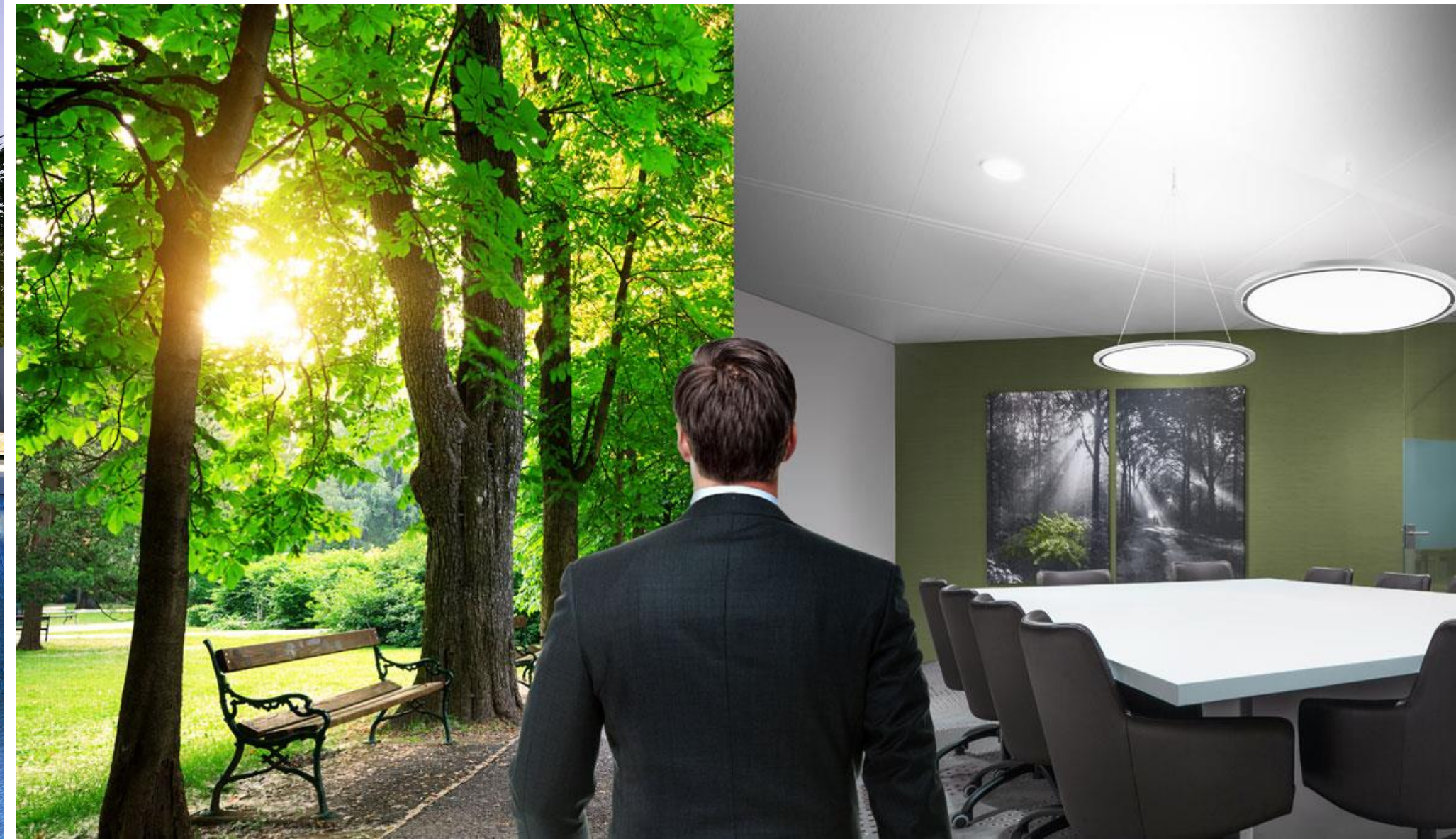






The world around is promoting the use of energy efficient technologies and we are playing our role by making a significant contribution to global climate protection. We proudly announces the Intelligent Building Control System that offers a broad range of options for optimum energy efficiency for every home.

V-Bus - Complete Home Automation serves as an intelligent system for electrical installation with automation and remote control making living more convenient, safe and flexible. The innovative V-Bus technology by Vihan communicates directly with KNX enabling the integration of many devices creating total flexibility in communicating with your home environment at your ease.





VERTICALS OF AUTOMATION



Residential Home Automation



Hospital Automation



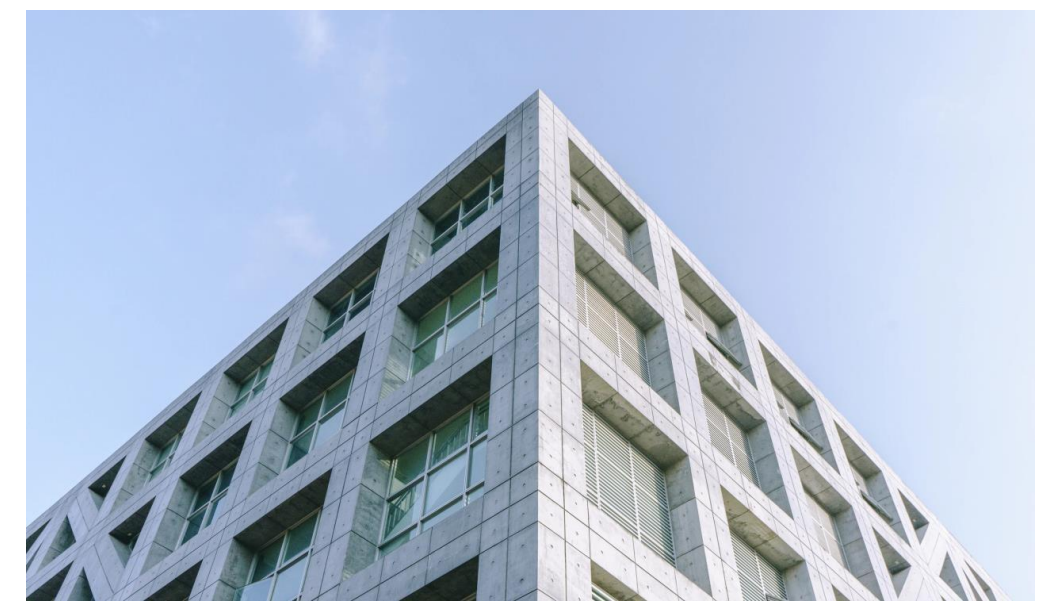
Retail/ Mall Automation



Commercial Offices Automation



Restaurant / Hotel Automation



School / University Automation



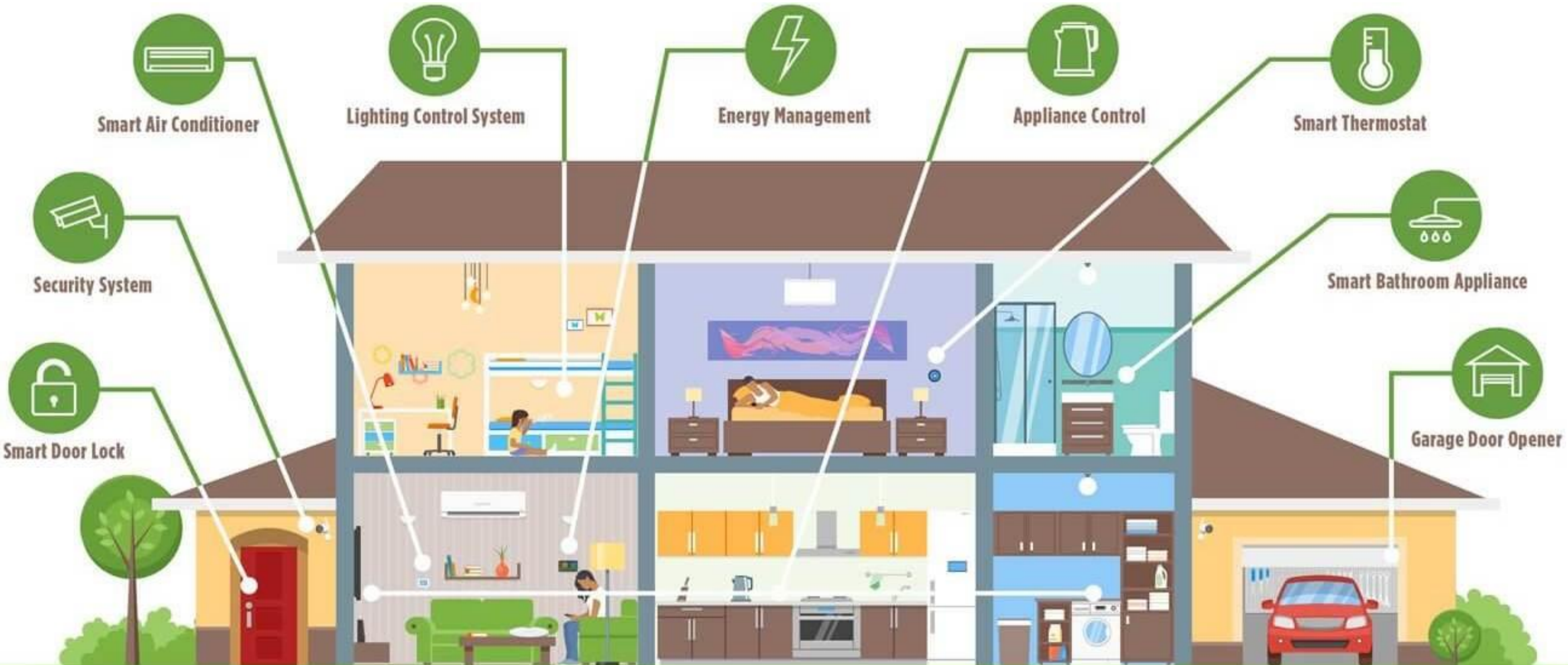
AUTOMATION FOR SMART HOME!

**VIHAN**  
SPREAD THE LIGHT  
V-BUS

MEMBER  
**KNX**









## How V-Bus Home Automation integrates with your home environment.

### Timesaving and easy installation

Has a solitary device for commissioning with a simple-to-utilize interface that spares time.

### Energy saving and management

Aids in decreasing energy usage by automatically turning off the lights and lets you manage your smart home instantly on a smart phone or a tablet.

### A Safe And Secure System

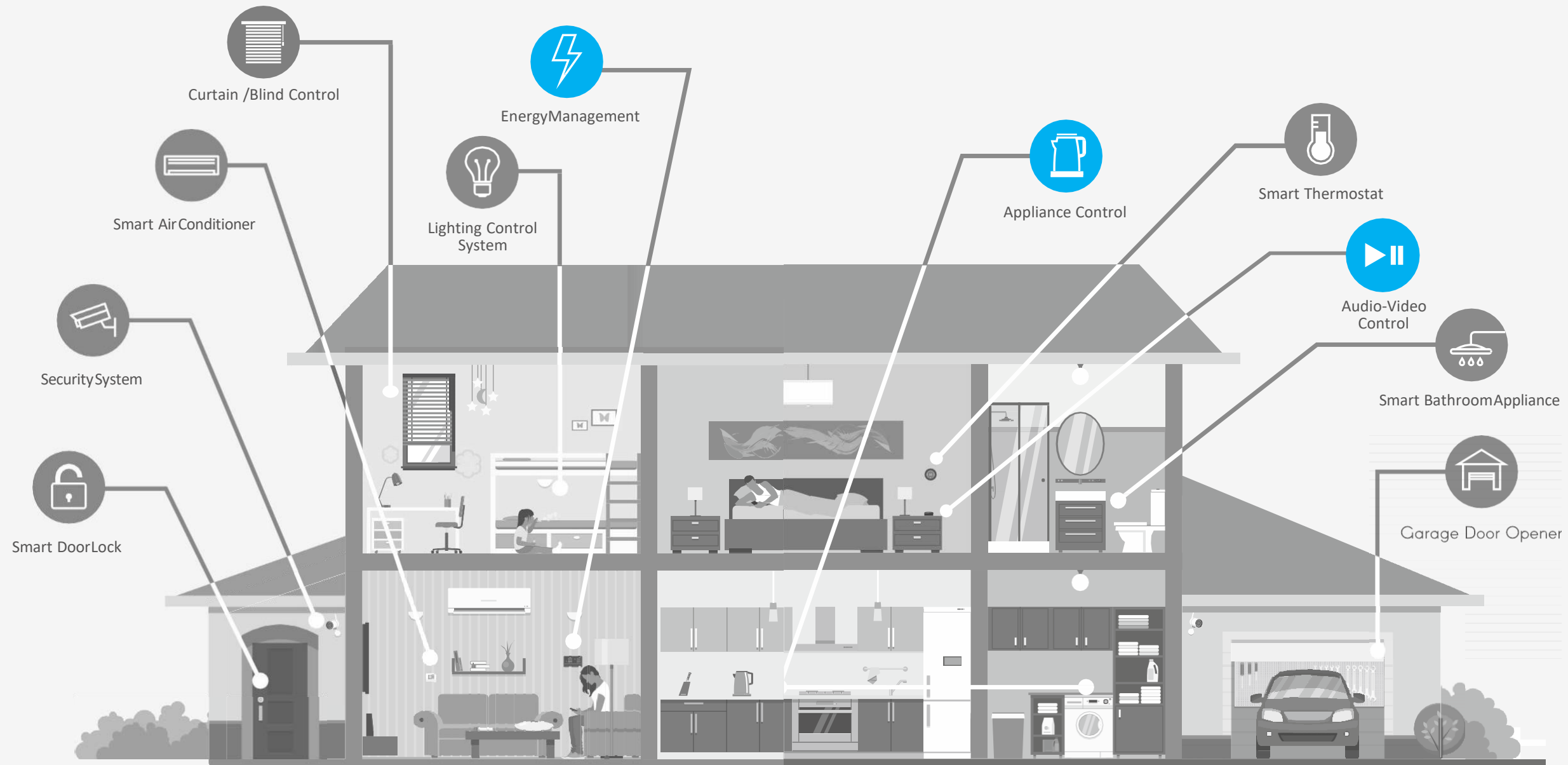
Guarantee safe & secured installation process and eliminates fear.

### Endless Flexibility and Personalization

Grants endless flexibility and personalization in the setup of your automation.

### A Future-proof Technology

Enables any automation to bear the most recent innovation, such as the internet of things (IoT).





## Smart Intelligent Touch Screen



The V-Bus Smart Control Screen grants one the power to manage every activity in the home without any difficulty. For instance, it skips the need for one to move around the house for switching the lights on or off. It doesn't anticipate that one should physically close the blinds and shutters. Likewise, the control of setting the ideal situation, changing the lighting and operating the AC is mere at one's fingertips. It enables one to administer the security, determine the color and customize the mood and ambience effortlessly.

### Highlights

- Switching & Dimming
- Control of blind and Shutters
- RGB Led Dimming & Logic Function
- Temperature Measure & Control Function
- Security Function
- Background Music
- Air Conditioning Control
- HVAC Control







# Push Button 8-Fold Rectangle

PushButton 8-Fold Champagne Gold (4 Rectangle)



PushButton 8-Fold Champagne Gold (4 Rectangle)



PushButton 8-Fold Silver (4 Rectangle)



PushButton 8-Fold WiseBlack (4 Rectangle)

Dimension: 86x80.5x28 mm

Dimension: 86x80.5x28 mm

Dimension: 86x80.5x28 mm



### Functions

- 8/16 Fold Push Button
- Switching and dimming
- Blinds and shuttercontrol
- Scenecontrol
- Sending of values, for e.g. brightness
- LEDindication - LEDhave 2colors
- Connected directly to the KNXbus without converter



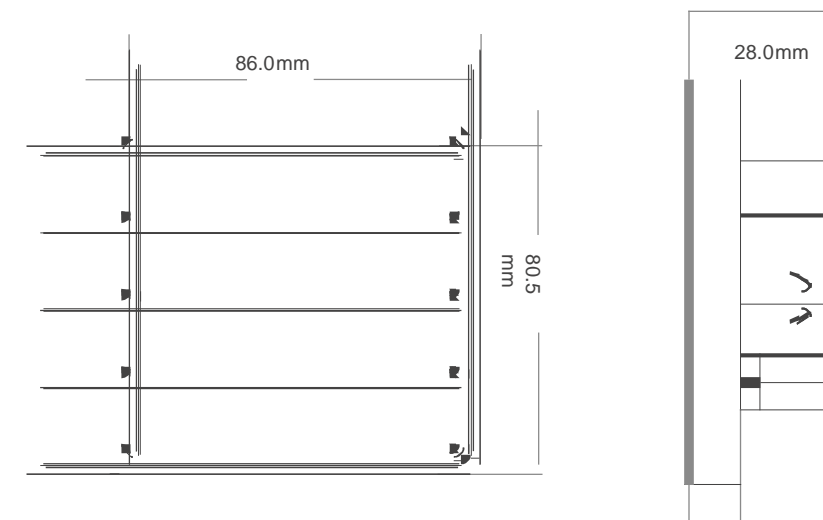
### Technical Parameter

Power Supply	Operating voltage 21-30VDC
Current Consumption	Max. 12mA
Power Consumption	Max. 360mW
Auxiliary Supply Voltage	21-30V, DC
Installation	86Box Mounted
Temperature Range	Operation -5°C~+45°C Storage -25°C~+55°C Transport -25°C~+70°C

The 8-Fold push button not only enables you to control and program your home lights, fan, blinds etc., but also empowers you to customize personal settings and modify home settings with an intuitive-menu-driven format.

### Highlights

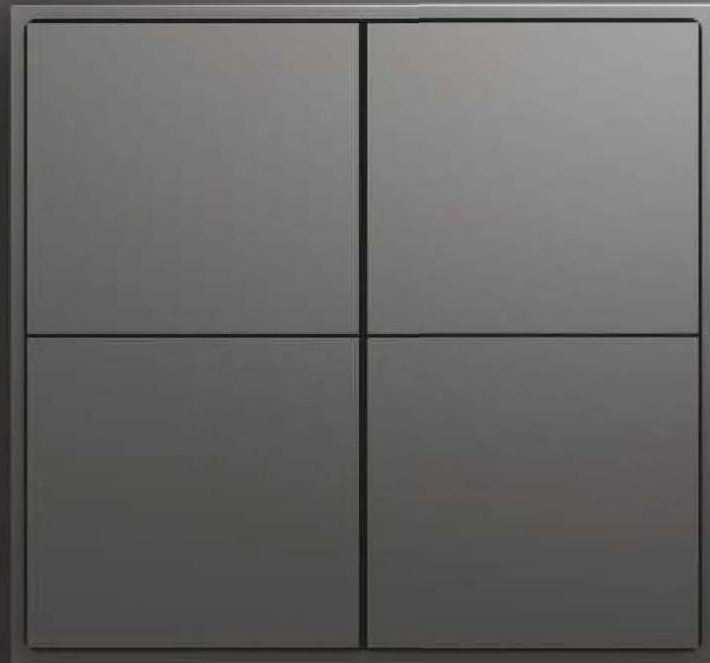
- 8-Fold PushButton
- Switching and dimming.
- Blinds and shuttercontrol.
- Scenecontrol.
- LEDindication.





# Push Button Series

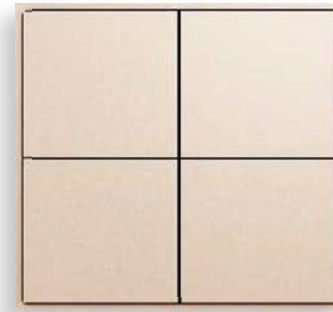
PushButton 8-Fold  
WiseBlack (4Square)



The V-Bus push button switch helps set the ideal lights and permits smooth function of drapes, fans and blinds.

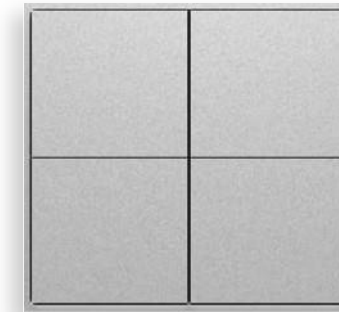
### Highlights

- 8-Fold PushButton
- Switching and dimming.
- Blinds and shuttercontrol.
- Scenecontrol.
- LED indication.



PushButton 8-Fold Champagne  
Gold (4Square)

Dimension: 86x80.5x28 mm



PushButton 8-Fold  
Silver (4Square)

Dimension: 86x80.5x28 mm



PushButton 8-Fold  
WiseBlack (4Square)

Dimension: 86x80.5x28 mm



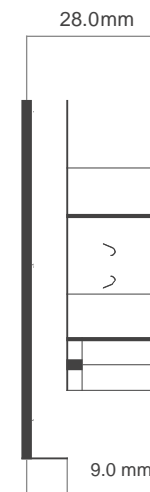
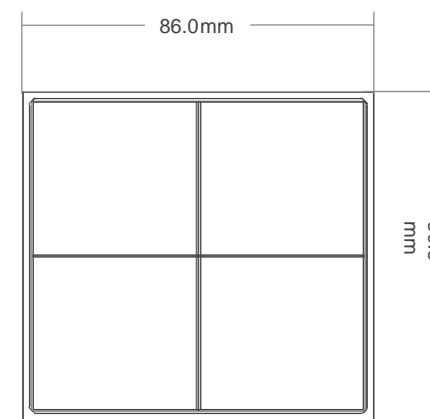
### Functions

- 8-Fold PushButton
- Switching and dimming
- Blinds and shuttercontrol
- Scenecontrol
- Sending of values, for e.g. brightness
- LED indication with 2 color LED
- Connected directly to the KNXbus without converter



### Technical Parameter

Power Supply	Operating voltage 21-30VDC
Current Consumption	Max. 12mA
Power Consumption	Max. 360mW
Auxiliary Supply Voltage	21-30V, DC
Installation	86 Box Mounted
Temperature Range	Operation - 5°C~+45°C Storage -25°C~+55°C Transport - 25°C~+70°C





## Push Button 16-Fold

Push Button 16-Fold WiseBlack



The 16-Fold push button not only enables you to control and program your home lights, fans, blinds etc., but also empowers you to customize personal settings and modify home settings with an intuitive-menu-driven format.

### Highlights

16-Fold Push Button

Switching and dimming.

Blinds and shutter control.

Scene control.

LED indication.





**Push Button 16-Fold Champagne Gold**  
Dimension: 172x80.5x28mm



**Push Button 16-Fold Wise Black**  
Dimension: 172x80.5x28mm



**Push Button 16-Fold Silver**  
Dimension: 172x80.5x28mm



**Push Button 16-Fold Champagne Gold**  
Dimension: 172x80.5x28mm



**Push Button 16-Fold Wise Black**  
Dimension: 172x80.5x28mm



**Push Button 16-Fold Silver**  
Dimension: 172x80.5x28mm





Temperature display,  
HVAC Air Conditioning,  
Fresh air,  
Floor heating control functions.

Background music control,  
VRV air conditioning gateway control function





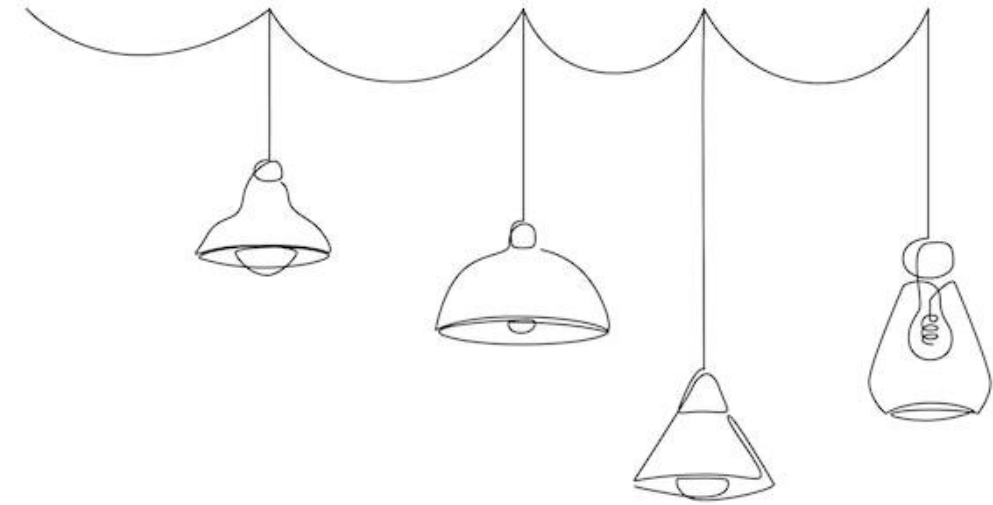
4 (Four) Button panel function,  
Temperature detection function,  
Real time Temperature,  
Humidity Display,  
With temperature control algorithm,  
Manual or Automatic control,  
Delay Shutdown Function.





6(Six) Button panel function,  
Air conditioning function,  
Floor heating function,  
Air Plate Function,  
Fresh air Function,  
It has a 2.5 inch OLED display with English display,  
Support proximity sensing function.





## Lighting Control

Home lighting is more than just switching the light on and off. With V-Bus intelligent home automation technology, you can create your lighting moods or scenarios at your ease. With the proliferation of the use of LED technology, you now have more options for color control as well.

## Switch Actuator Series

The V-Bus switch actuator series has an energy efficient lighting system that allows one to control the home lightings at just a touch, either in a single room or throughout the home. It also enables one to customize and automate the lighting to set the right mood and ambience from anywhere, anytime.

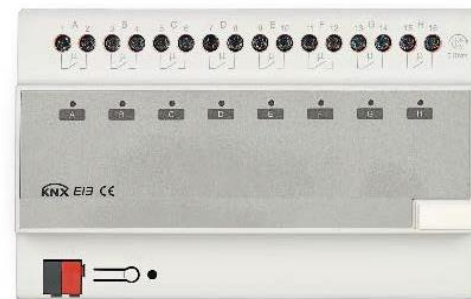


### Highlights

- Switching Control
- Central Lighting Control
- Constant Lighting Control
- Timing Control
- Light Scenes
- Current Measurement



## Dimming Actuator Series



### Functions

- Manual operation available.
- Time functions, on/off delay
- Support 8 Scene control
- Logic operation AND, OR, XOR, gate function
- Status response
- Load Rating: 8Amp, 10Amp, 16Amp
- Load Monitoring
- Current Measurement ( mA, A and kW)
- Selection of preferred state after bus voltage failure and bus recovery
- Staircase lighting functions with warning and adaptable staircase lightingtime



### Technical Parameter

PowerSupply	Operating voltage 21-30VDC
Current Consumption	Max. 12mA
Power Consumption	Max. 360mW
Outputs	34ch/8ch/12ch
Rated Voltage and Current	250VAC(50/60Hz) and 8/10/16A
Auxiliary Power Consumption	2-8W
Temperature Range	Operation - 5°C~+45°C Storage -25°C~+55°C
Installation	Transport - 25°C~+70°C

## LED Dimmer Actuator



LED dimmer – 4 Fold 4 Amp  
Dimension: 72x91x132mm



### Functions

- Switching the light Relative dimming √ Absolute dimming √ Status report
- Setting 15 scenes
- Staircase lighting function
- Bus recovery (or reset) function
- Preset value and modify preset value functions
- Switch/relative dimming via manual buttons

## 1-10V Dimmer Actuator



1-

1-10V Dimmer Actuator 6 -Fold  
Dimension: 107x91x64mm



### Functions

- Control switch of the LED lamp
- Relative dimming function
- Control brightness values of the LED lamp
- State report, error report
- 15 scenes setting
- Staircase lighting function
- Bus recovery function
- Preset function, set preset function
- Set output current for per channel manually
- Switch/relative dimming via manual buttons



### Technical Parameter

Power Supply	Operating voltage 21-30VDC
Current Consumption	Max. 12mA
Power Consumption	Max. 360mW
Outputs	1-10V DC (passive), max. 100mA per output 4 Channels / Each channel with two outputs
Current	Constant current 350mA/700mA
Output Switch Current	16A/250V AC
Load Voltage	3-48VDC
Operating/Display	Red LED and push button for assigning the physical address green LED flashing means the device is working normally.
Temperature Range	• Operation 5°C-45°C • Storage 25°C-55°C • Transport 25°C-70°C
Installation	On 35mm din rail





## Blind And Shutter Control

The blinds and shutters are small but integral part of everyone's houses. The V-Bus home automation empowers one to control the movement of blinds and shutter either by using the in-built interface manually or by using a promptly available smart phone advantageously. However, the latter technique is beneficial and fulfilling to watch as the blinds and shutters open and close smoothly without any physical assistance.

# Shutter Actuator Series



## Functions

- Movement UP/DOWN
- Stop/Louvre adjustment/open close stop
- Move into preset position (up to 2 preset positions)
- Set preset position (modification of the preset position during operation)
- Move to position 0 ... 100%
- Adjustment louvre to position 0 ... 100% (only Blind "Blind" working mode)
- Automatic Scenes/Block/ Forced operation
- Monitoring of wind, rain and frost protect (cyclical)
- Status display of the current position, status display of the current operating mode
- LED display, Two working mode, Venetian Blind and Shutter
- All Channel control
- with external sensor wind, rain and frost detection.



## Technical Parameter

Power Supply	Operating voltage 21-30V DC
Current Consumption	Max. 5mA - 12mA
Power Consumption	Max. 150- 360mW
Outputs	1ch/2ch/4ch 8A/10A/8A
Installation	On 35mm din rail
Temperature Range	Operation - 5°C~+45°C Storage -25°C~+55°C
	Transport - 25°C~+70°C

The smart V-bus system offers greater living experience in terms of comfort and convenience. It allows one to control blinds and shutters by merely pressing a button, operating an automated touch screen or accessing a handy smart phone.



## Input Device Series (Universal Interface)



**Universal Interface 6- Fold**

Dimension: 41.86x48.2x19.7 mm



**Universal Interface 3 -Fold**

Dimension: 36x91x62.5 mm

## Power Supply Series



**Power Supply- 640 mA**

Dimension: 71x91x64mm



**Power Supply- 320mA**

Dimension: 36x91x62.5 mm



**Power Supply- 320-640mA- Automatic**

Dimension: 71x91x64mm



### Functions

- Switch function
- Switch and dimming of the lights
- Send value and forced output
- Scene control
- Switching sequence
- Counter
- Multiple operation
- Shutter control (1 or 2 button operation)
- LED function



### Technical Parameter

Power Supply	Operating voltage 21-30VDC
Key Scanning Volt.	20VDC
Input Current	5mA -20mA
Operating/Display	Red LED and push-button for assigning the physical address, green LED flashing means the device working normally.
LED output voltage	5VDC
LED output current	Max. 2.5mA, limited via series resistor of 2K Safety short-circuit-proof, overload protection, reverse voltage protection
Temperature Range	<ul style="list-style-type: none"> <li>• Operation -5°C~+45°C</li> <li>• Storage -25°C~+55°C</li> <li>• Transport -25°C~+70°C</li> </ul>



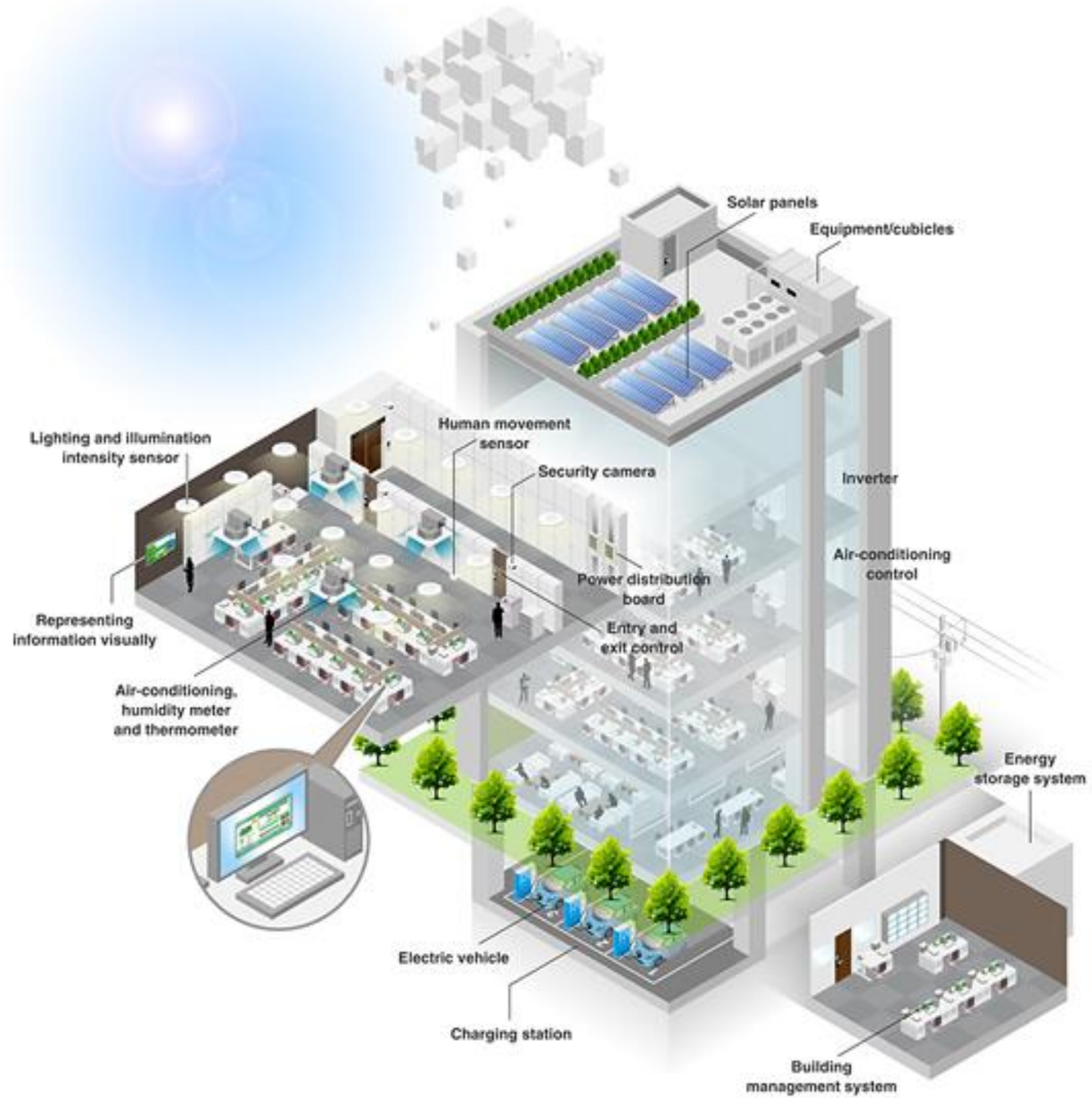
### Functions

- EIB/KNX power supply produces and monitors EIB/KNX system voltage
- The bus is decoupled from the power supply with the integrated choke
- The power supply is connected to the bus line with a bus connection terminal
- A reset is triggered by pressing the reset pushbutton and lasts for 22 seconds (regardless of the duration of the pushbutton action)
- The bus line disconnected from the power supply and the devices connected to this bus line are returned to their initial state
- If the line has to be disconnected for a longer period, the bus connection terminal must be removed from power supply
- A 30V DC auxiliary voltage is made available via an additional connection terminal



### Technical Parameter

Power Supply Input voltage	95V -255Vac , 47-63Hz
External Power	Input voltage
DC15V- DC30V	1.5A
Power Loss/Efficiency	<6W/75%
Output (PSU)	1 line with integrated choke
Nominal / Aux. voltage	30 VDC +1/-2V, SELV Aux.
voltage output	1 (without choke)
Short-circuit current	<13A
Nominal current	640mA, short-circuit
Failure back-up time	>200ms
EIB/KNX output	Bus connection terminal
(black/red) Aux. voltage output	Connection terminal (yellow/grey)
Temperature Range	<ul style="list-style-type: none"> <li>• Operation -5°C~+45°C</li> <li>• Storage -25°C~+55°C</li> <li>• Transport -25°C~+70°C</li> </ul>
Installation	On 35mm din rail



# IBMS powered by IoT

New horizons with IoT enabled Automation





# IBMS with IoT- Empowered Connectivity

